

COMPANY PROFILE

EDINET

CCTV Solution

3D Solution

GIS Solution

VTS Solution

SI&WEB Solution

Communications &
Design·Methodist

Table of Contents

- 01 EDINET Vision
- 02 Organization Chart & Human Resource
- 03 Corporation History
- 04 CCTV Solution
- 05 3D Solution
- 06 GIS Solution
- 07 Harbor Monitoring Solution
- 08 SI&WEB Solution
- 09 Information and Communication Contractors & Supervision



01. EDINET Vision

EDINET is Global IT Solutions Company.



To be a leading company in the future digital environment, we put our customers' satisfaction as the first business priority. We constantly develop core technologies and manufacture products on IT, CCTV images, VTS in 3D convergent technology area.

Our mission is to provide the best products to satisfy our clients' specific needs. We promise our clients that we will be the growing company based on trusts and experiences in the constantly mutating digital world.

Name	Edinet Co., Ltd.
Established	Feb. 1998
CEO	Lee Byeung Geol
Certification	Venture Com Telecommunications Contractor Engineering Business R & D Center Busan leader in IT Innovation SMEs(INNO-BIZ) National emergency mobilization supplier Kibo A+ Members

▶ Patents

- Harbor video monitoring system and solution (Patent no. 10-0990764)
- Base optimal video monitoring system (Patent no. 10-1012281)
- Real-time video port control system using the multi camera system (Patent No.10-1045323)
- Real-time video port control system using smart devices (Patent No.10-1048508)
- Field video control system using a portable device (Patent No.10-1124267)

02. Organization chart

Customer Satisfaction
 Keeping the top priority,
Best Strategies and solutions Offers.

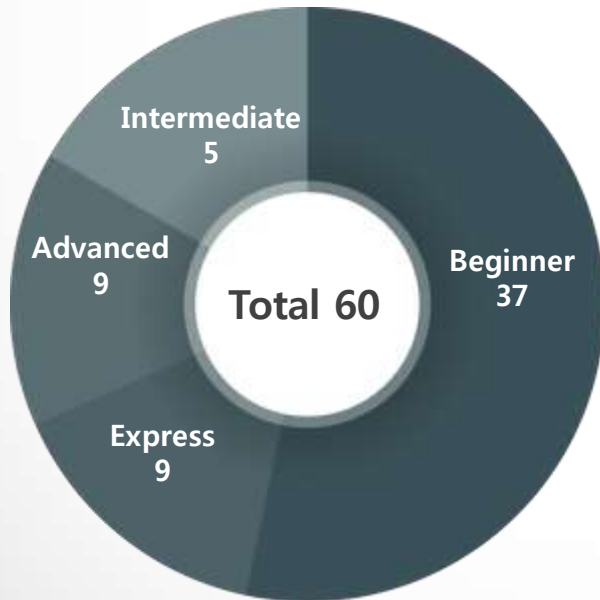


02. Human Resource

▶ Human Resource

	Total	Specialization						Planning
		Researcher	SI	3DGIS	WEB	E-LOGIS	I&C Construction	
M	60	5	9	10	20	4	10	2

▶ Classification



03. History



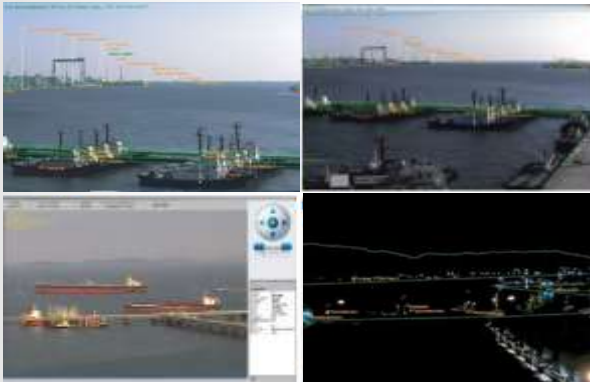
04. CCTV Solution

CCTV Solution is Intelligent Video Matching Monitoring system which combined intelligent video analysis technology, real time video, and virtual reality. The solution provides the technology which is the ship detection, targeting and tracking.

It will be possible to prevent the harbor accident by monitoring of the surrounding environment through real image from CCTV

▶ Major Experiences

- Construction CCTV Image-based Control Information System in Busan New Port (Busan Regional Ocean & Fisheries Administration)
- CCTV Installation for Eliminating Shadow Areas in Mipo Port (service contract (Ulsan Port Authority))
- Construction of Intelligent Video Control Information System in Busan Port (Busan Regional Ocean & Fisheries Administration)
- Construction of Intelligent Video Object Recognition based Control Information System in Daesan Port (Daesan Regional Ocean & Fisheries Administration)
- Construction of Intelligent Image-based Total Control System in Ulsan Port (Ulsan Regional Ocean & Fisheries Administration)



▶ Production

- CMS-100 (CCTV Matching System)
- ATS-100 (Automatic Targeting System)
- PCMS-100 (Portable Camera Matching System)
- MCMS-100 (Mutil-view CCTV Matching System)

04. CCTV Solution (#1)

▶ ATS-100 (Automatic Targeting System)



- Automatic Targeting System is a vessel synthesis control system. It moves CCTV camera quickly to monitor specific section or location of the vessel in real time video by mapping electronic nautical chart, ship object in CCTV image and AIS coordination.
- This system recognizes vessels and surrounding circumstances through real-time image and prevents accident.

▶ PCMS-100 (Portable Camera Matching System)



- Portable Camera Matching System (PCMS-100) is the image matching system for smart device with internal camera. By matching AIS signal which was received through coordinate of the current position which is using GPS module and 3G, this system can monitor ships which are anchored or moving ships' condition and route in real time.
- This system is portable so it can monitor not only fixed position but also every position that is visible from port. It provides upgraded ship monitoring function without constraints of time and space.

04. CCTV Solution (#2)

▶ MCMS-100 (Multi-view CCTV Matching System)



- MCMS-100 (Multi-view CCTV Matching System) is a port control information system which has maximized the effectiveness of port monitoring through image.
- The introduction of panorama system solves a narrow angle of field of camera. Also, with AIS, PORT-MIS and Radar signal, this system monitors ship information, current condition and routing in real time.

▶ CMS-100 (CCTV Image Matching System)



- CCTV Image Matching System(CMS) is the Central Monitoring System which matches with CCTV images. It extracts Ship Object from the filmed video. It monitors status of extracted ship object and its path in real-time by matching the extracted object on 3D spatial coordinate with AIS (Automatic Identification System) signal which received by radio channel. It is a synthetic Intelligent Video Matching Monitoring System which combined intelligent video analysis technology, real-time video, and virtual reality.

05. 3D Solution

We have a national and international commercial and open source-based literacy and its self-developed engine 3D engine and perform a virtual reality and 3D modeling built on it.

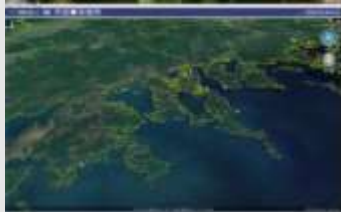
Major Experiences

- 3D Application System for Visualization Costal Flood Threat Forecasting Map in 2012 (Korea Hydrographic and Oceanographic Administration)
- Yeosu Expo Oceanographic Data 3D Expression System in 2012 (Korea Hydrographic and Oceanographic Administration)
- 3D Visualization Application System for Coastal Inundation Forecasting in 2011 (Korea Hydrographic and Oceanographic Administration)
- 3D Maritime Safety Management System (Ulsan Port Authority)
- Construction and Research for Ocean Territory 3D Supporting System in 2010 (Korea Hydrographic and Oceanographic Administration)
- 3D Port Control Dashboard System (Ulsan Regional Ocean & Fisheries Administration)

Retention Solutions

- 3DVMS-100 (3D Vessel Monitoring System)

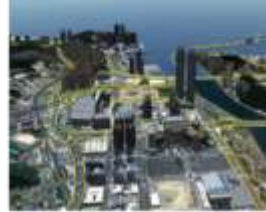
Development of Mass 3D Geographic Engine based Virtual Reality



Implementation of the Entire Korean Peninsula 3D Geographic



Real-time Navigation System with bypass roads flood inundation area



Implementation of the GIS-based Virtual City

Expression of Analysis for Climate Change and Oceanographic Data



3DVMS-100 (3D Vessel Monitoring System)



- We provide moving 3D objects and monitor the charge of space with time, and then we visualize and embody dynamical 3D port environment



06. GIS Solution

GIS Solution is special analysis valuation system (GIS based) used to analyze and valuate space. It processes and expresses numerical map, aerial photo, and UIS information. Also, expressed special statistical data provides analysis using special information.

Major Experiences

- Construction GIS-Based Coastal Disaster Vulnerability Assessment System in 2012 (Korea Hydrographic and Oceanographic Administration)
- Construction GIS-Based Coastal Disaster Vulnerability Assessment System in 2011 (Korea Hydrographic and Oceanographic Administration)
- Development Coastal Rating Mobile App (The Korean Association of GIS)
- Demonstration of Construction GIS-Based Coastal Disaster Vulnerability Assessment System in 2010 (Korea Hydrographic and Oceanographic Administration)
- Construction Web-based Ship Location Information System (Yeosu Regional Maritime Affairs & Port Administration)
- Moving Sea Ranch GIS System (Korea Fisheries Resources Agency)

Retention Solutions

- Ocean 3D Simulation System - 3DOS (3D Ocean Simulation)
- GIS-based Spatial analysis Evaluation System (GIS-Based Assessment System)

Collection of Spatial Data and Editing Layer, Statistic, Analysis



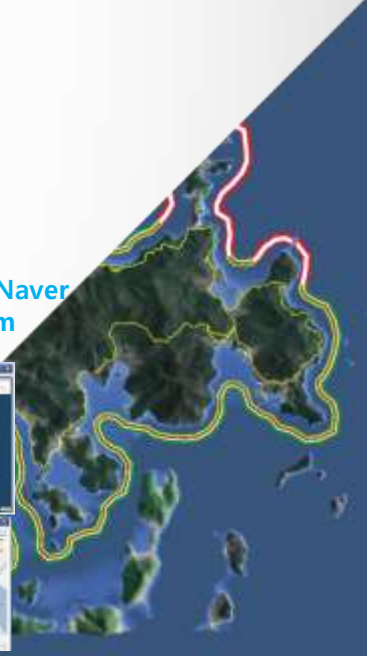
Producing Various Thematic Map Using Numerical Map, e-Sea Map, Aerial Photography



Construction Android and IOS6 Based Hybrid Mobile GIS System



Construction Google and Naver OpenAPI-based System



07. Harbor Monitoring Solution (#1)

We construct and operate the control solutions for domestic traffic control environment.

We have a core technology of the vessel position information analysis and processing using Radar, AIS, CCTV Auto Targeting, e-Sea Map System.

Major Experiences

- Installation of Control Center, Design Basic and Detailed in Busan South Port (Busan Metropolitan City)
- Construction of CCTV Video-based Control Information in Busan New Port (Busan Regional Ocean & Fisheries Administration)
- Construction Maritime Traffic Safety Integrated Information System in Ulsan Port (Ulsan Port Authority)
- Construction Image Control Information System in Busan Port (Busan Regional Ocean & Fisheries Administration)
- Construction Intelligence Image Object Recognition based Control Information System in Daesan Port (Daesan Regional Ocean & Fisheries Administration)
- Construction Image-based Intelligence Total Control Information System in Ulsan Port (Ulsan Regional Ocean & Fisheries Administration)
- Construction of Vessel Information System in Ulsan Port (Ulsan Port Authority)
- Expanding Service for Vessel Traffic Control (VTS) Information and Facility Management System (Ministry of Land, Transport and Maritime)
- Construction of Port and Vessel Traffic Information Management System (Ministry of Land, Transport and Maritime)

Retention Solutions

- VMS-300 (Vessel Management System)
- APS-100 (AIS Parsing & Distribution System)
- VDMS (VHF-DSC Management Solution)

- Vessel Management System(VMS) is an integrated vessel monitoring system which, provides various vessel operation statistic information and monitors specific vessel's operation in real-time. It maps received AIS location information with latitude and longitude coordination on ECDIS. Also, it connects with PORT-MIS information and provides detail information about vessels and ferries.



VMS-300 (Vessel Management System)



07. Harbor Monitoring Solution (#2)

▶ VDMS (VHF-DSC Management Solution)



- VHF-DSC Management Solution is a regulation system for distress which applied the newest computer and digital technology. It digitalizes circuit and works with VOIP (Voice Over Internet Protocol) which is specifically formulated. DSC (Digital Selective Call) Data Format is applied NMEA0183 Protocol which is international standard to perform call facility for distress of ship and for other situation.
- VHF-DSC Management Solution is available for calls of ships and the ships' location by connecting DSC-only server and VTS Server (individual orders). It has features like:

▶ APS-100 (AIS Parsing & Distribute System)



- APS(AIS Parsing & Distribute System) applied the newest technology. APS collect AIS(Automatic Identification System) data and VHF/DSC (Digital Selective Calling) through TCP/IP. The collected data performs automatic data distribution system with user authorization by complying with NMEA protocol standard. Also, this system is connected with AIS and DSC data transfer system. So it can manage vessel traffic and security information data which was embodied by adopting a security of vessel sailing and the newest location information collecting technology.

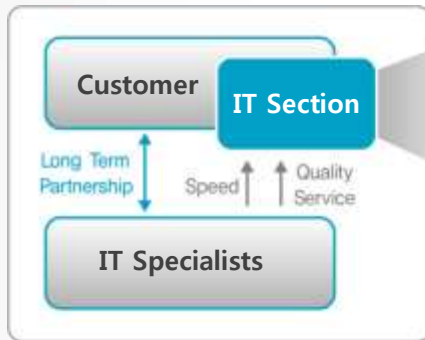
08. SI&WEB Solution (#1)

We provide system design and development, construction, management, education, deploy management for the best established information system on your environment and needs.

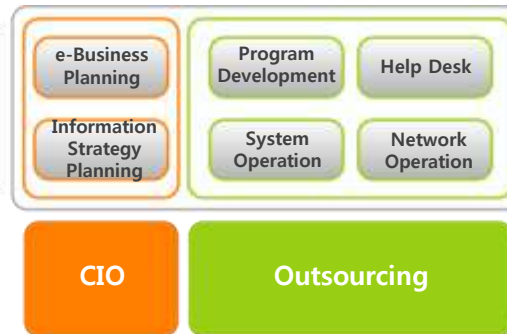
▶ IT Outsourcing

We support the decision-making, strategic planning, analysis of the driving performance, effective IT outsourcing management system established on IT outsourcing Promotion

Strategic Outsourcing Model



Customers IT Section



▶ SI Consulting

We provide IT service for Helping customers to effectively achieve the goals and a reduction of progress rate and the best service for customers.

▶ Network Service

We provide NW monitoring, NW Traffic storage management, NW security service. And we design and construct NW, VPN such as WAN, LAN, Voice.

▶ IT Infrastructure Construction

We analyze and diagnose, planning, design IT infrastructure for providing the optimized System

▶ Mobile Service & App Service

We develop the optimal mobile applications, mobile web page, contents and service applications. And we build the optimal smart business environment for customers' work.

08. SI&WEB Solution (#2)

▶ Major Experience

- Construction of Visiting Tragic Crew Cenotaph System (Korea Seafarer's Welfare & Employment Center)
- Perform the Next-generation Maritime Logistics Platform BPR/ISP (KTNET)
- Construction B/L Information System (KTNET)
- IFRS Adoption, Construction and Improvement of ICT-based Business System (Korea Institute of Maritime and Fisheries Technology)
- Development and Redevelopment of Seafarer's Welfare Management Program (Korea Seafarer's Welfare & Employment Center)
- Construction of State-of-the-art IT Sea freight imports Infrastructure (National Information Society Agency)
- Construction of ICT System (CMS) (Yeosu Gwangyang Port Authority)
- Serviced Improving Relation Financial Information of Consolidation Accounting System for Ministry of Strategy and Finance (Korea Institute of Maritime and Fisheries Technology)
- Development of ICT System and Service Advancement Business (Ulsan Port Authority)
- Construction of Global Integrated Logistics Trade Information Network (Ministry of Land, Transport and Maritime)
- Advancement and Redevelopment of Port Management Information System(PORT-MIS) (Ministry of Land, Transport and Maritime)
- Supplying and Enlargement of Public I-PIN. System Improvements Project Participation (Korea Information Security Agency)

▶ Retention Solutions

- EAMP – Shipping Dealer Management System
- CY Operating System
- Terminal Operating System
- Web and Mobile Transport Management System
- SHIPPING ORDER Management System
- Container Transport System
- Inspection Management System
- CONTAINER INVENTORY Management System
- Port-MIS Education System

▶ Retention Solutions

- Personnel Payroll System
- Budget Accounting System (IFRS Applicable)
- Property Management System
- Facility Management System (RFID Applicable)
- Learning Management System
- CRM System

08. SI&WEB Solution (#3)

We complicated web solutions and websites tailored for Web accessibility with clear objectives and strategies successfully.
Now, the world has been rapidly expanding mobile web is essential, not optional.

▶ Web Accessibility



Web accessibility means that people with disabilities can use the Web. More specifically, Web accessibility means that people with disabilities can perceive, understand, navigate, and interact with the Web, and that they can contribute to the Web. Web accessibility also benefits others, including older people with changing abilities due to aging.

▶ Privacy

2011.09.30 We enter into force in accordance with the Privacy Act and existing privacy laws and is responsible for generating more enhanced protection and management are abolished, and provides technical accordingly..

Support Knowledge

Checking web vulnerabilities
Privacy protection consulting
Web security tools

Technological protection measures

Access management	Password management
Encryption	Log Storage and Management
Installation and Operation the Access Control System	

▶ Mobile Web

Mobile market is growing rapidly worldwide as the development and proliferation of smartphones.
 Now, the world has been rapidly expanding mobile web is essential, not optional.
 We have the technology to build a Web that is optimized for mobile.

▶ Solutions

- CMS - Content and Operational Support Management System
- iSurvey – Online Survey System
- KMS – Knowledge Management System
- Business Management System

▶ Major Experiences

- Construction Port Logistics U-System Level 2 (Incheon Port Authority)
- Improvement Mobile Web Page and KODC English Web Page (National Fisheries Research & Development Institute)
- Construction Web Page for Foreign Language (Incheon Regional Ocean & Fisheries Administration)
- Renewal Web Page and Construction Mobile Web Page (Fisheries HRD Center)
- Construction Mobile Web Page (Yeosu Regional Ocean & Fisheries Administration)
- Construction Web Page for 15th International Conference on Harmful Algae (National Fisheries Research & Development Institute)
- Implement for Web Accessibility and Augmenting (Busan Port Authority)
- Implement for Web Accessibility and Construction of Branch Webpage (National Fisheries Research & Development Institute)
- Security Consolidation for Protecting Privacy (Korea Seafarer's Welfare & Employment Center)
- Action for Freedom of Information Act and Improvement for Web Accessibility (Korea Institute of Maritime and Fisheries Technology)
- Improvement Web Page (Busan Regional Ocean & Fisheries Administration)
- Improvement Web Page (Ulsan Regional Ocean & Fisheries Administration)
- and so on.

COMPANY PROFILE

EDINET

Edinet Co.,Ltd. is the global IT total solution company.



주식회사 에디넷

www.edinet.co.kr

[Headquarters]

Hyangoon B/D 4th Floor, 3-6 308 Joongang
DaeRo, Dong Gu, Busan, Republic of Korea
TEL : +82-51-442-2415~6 / 465-0573
FAX :+82-51-442-4415

[Branch]

Daeyang B/D 5th Floor, Namdong Dae Ro,
Namdong Gu, Incheon, Republic of Korea
TEL : +82-32-434-2415~6
FAX : +82-32-434-9100